



Mr. C
RESIDENCES
Downtown

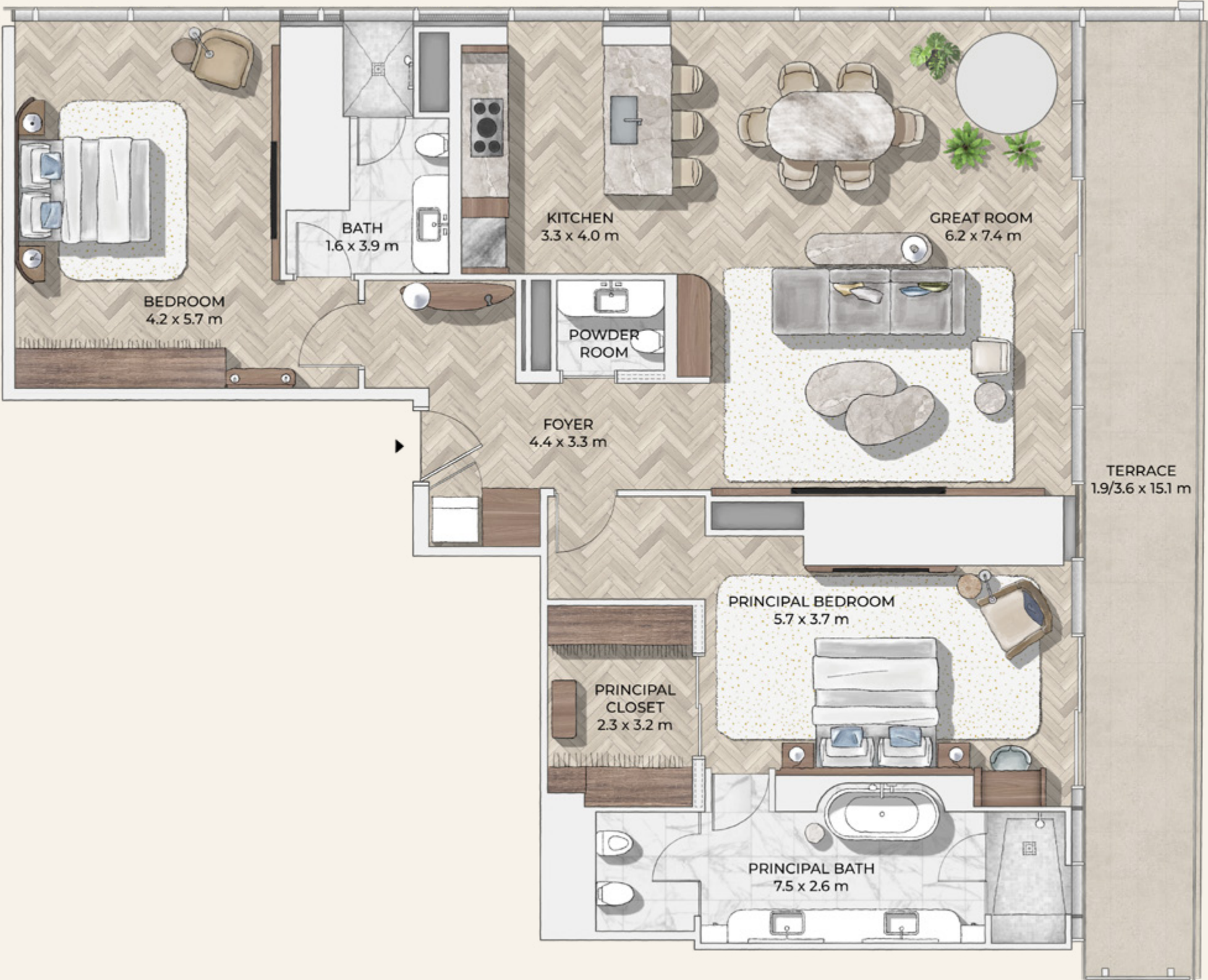
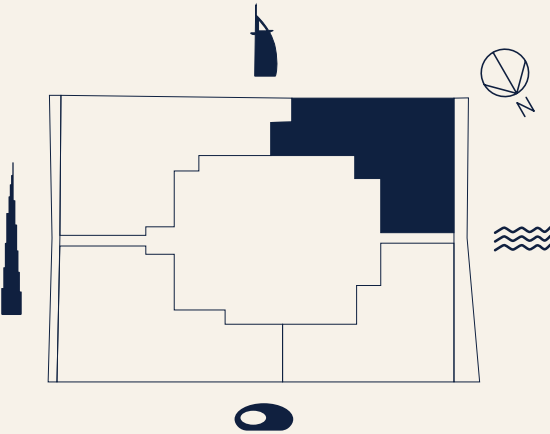
BY
IGNAZIO
AND
MAGGIO
CIPRIANI

2 BED
LOWER SOUTH
UNIT 02
FLOOR 11-32

INTERNAL AREA
1,976 sq ft (184 sq m)

EXTERNAL AREA
from 300 sq ft (28 sq m)
to 439 sq ft (41 sq m)

TOTAL AREA
from 2,276 sq ft (212 sq m)
to 2,415 sq ft (225 sq m)



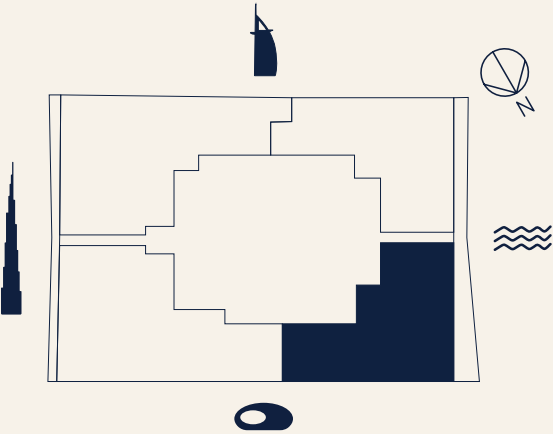
All information in the layout depicts the current status of the project but may be subject to change once final approval from the authorities is obtained. Drawings are an artistic impression for marketing purposes and are not to scale. The size, shape and position of windows, doors, ducts, columns, terraces and balconies are subject to change during final coordination. The furniture is to indicate the space available and the likely position of electrical points. It is not part of the standard fixtures.

2 BED
LOWER NORTH
UNIT 03
FLOOR 11-32

INTERNAL AREA
1,986 sq ft (185 sq m)

EXTERNAL AREA
from 291 sq ft (27 sq m)
to 412 sq ft (38 sq m)

TOTAL AREA
from 2,277 sq ft (212 sq m)
to 2,398 sq ft (223 sq m)



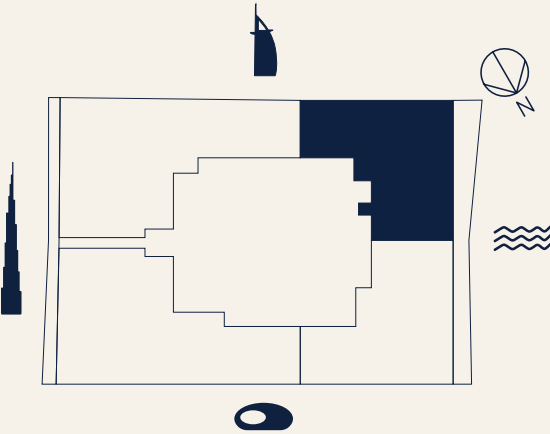
All information in the layout depicts the current status of the project but may be subject to change once final approval from the authorities is obtained. Drawings are an artistic impression for marketing purposes and are not to scale. The size, shape and position of windows, doors, ducts, columns, terraces and balconies are subject to change during final coordination. The furniture is to indicate the space available and the likely position of electrical points. It is not part of the standard fixtures.

2 BED
HIGHER SOUTH
UNIT 02
FLOOR 34-44

INTERNAL AREA
1,933 sq ft (180 sq m)

EXTERNAL AREA
from 292 sq ft (27 sq m)
to 412 sq ft (38 sq m)

TOTAL AREA
from 2,225 sq ft (207 sq m)
to 2,345 sq ft (218 sq m)



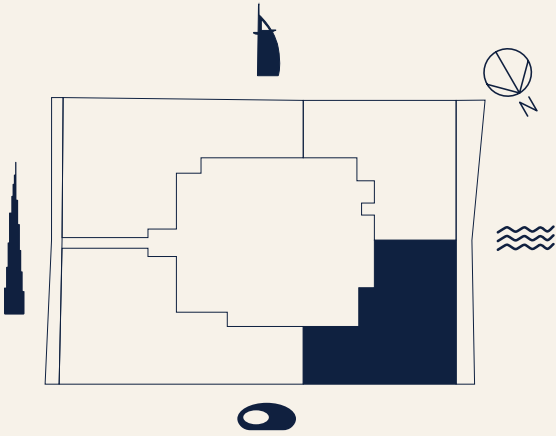
All information in the layout depicts the current status of the project but may be subject to change once final approval from the authorities is obtained. Drawings are an artistic impression for marketing purposes and are not to scale. The size, shape and position of windows, doors, ducts, columns, terraces and balconies are subject to change during final coordination. The furniture is to indicate the space available and the likely position of electrical points. It is not part of the standard fixtures.

2 BED
HIGHER NORTH
UNIT 03
FLOOR 34-44

INTERNAL AREA
1,945 sq ft (181 sq m)

EXTERNAL AREA
from 305 sq ft (28 sq m)
to 438 sq ft (41 sq m)

TOTAL AREA
from 2,250 sq ft (209 sq m)
to 2,383 sq ft (222 sq m)



All information in the layout depicts the current status of the project but may be subject to change once final approval from the authorities is obtained. Drawings are an artistic impression for marketing purposes and are not to scale. The size, shape and position of windows, doors, ducts, columns, terraces and balconies are subject to change during final coordination. The furniture is to indicate the space available and the likely position of electrical points. It is not part of the standard fixtures.